

# TEMs Links



August 2006

VOLUME 7 ISSUE 2

## CC's Corner

Dear All,

Welcome to the August/September 2006 issue of *TEMs Links*. As you read this I will be in Europe visiting The University of Aarhus in Denmark, looking to increase the exchange program between Aarhus and CDU. I will also be in the US in November, promoting the TEM course to US students as well. All this will be made easier by the TEM course winning a *Citation for Outstanding Contributions to Student Learning* from the Carrick Institute of Higher Education ([www.carrickinstitute.edu.au/carrick](http://www.carrickinstitute.edu.au/carrick)). This is a prestigious national award which is good news for all, as you now graduate from an award winning course!

The travel is part of a sabbatical program I am on for Semester 2 and while I am away, Dr Sam Setterfield ([www.cdu.edu.au/ehs/research/TEDS/setterfield\\_profile.html](http://www.cdu.edu.au/ehs/research/TEDS/setterfield_profile.html)) will be Acting Course Coordinator. Sam can be contacted via email ([sam.setterfield@cdu.edu.au](mailto:sam.setterfield@cdu.edu.au)) or by phone (08 8946 6756) for any queries about the course. Penny Würm will continue in her role as Research Coordinator during this time.

There will be some changes in core unit offerings in 2007, with the unit, WLM 404 *Natural Resources and Livelihoods* now offered as a core. The unit examines concepts and issues related to the use of natural resources by local communities. How can economic and ecological tools be used in the sustainable management and commercial use of natural resources? Natural resource managers will gain an understanding of the opportunities and challenges involved in developing natural resources for livelihoods, and the skills required to participate in a diverse range of conservation, commercial and cultural enterprises. Sounds highly topical to me! This unit is an S1 unit, although it will be run in June 07 as a block mode and will be run in Maningrida, NT. Tony Griffiths of CDU's Institute of Advanced Studies is the unit co-ordinator. In addition, the Savannas unit, SBI 507 is getting an upgrade and will now look at the ecology and management of two significant tropical ecosystems, rainforests and tropical savannas. Emma Tiller is working with Sam Setterfield and myself to revise the unit and introduce new material on issues relating to tropical forests and the ecosystem services these biomes provide. So a new and improved unit that will keep TEM students stimulated and up to date with issues in tropical environmental management.

This issue features a range of articles on the examination for MTEM theses, an announcement about an evaluation of the impact of TEM on graduates professional practice, and our usual features and upcoming events.

I hope your semester goes well and I will see you all next year, after I return to Campus on 18th January 2007.

Regards

Lindsay H

TEM Course Coordinator

CDU, Darwin



### INSIDE THIS ISSUE:

TEM program wins national award

TEM program review

Weed risk management

Educational Links with Indonesia

TEM submissions, graduations & update

MTEM Research Projects Report

Conferences, Seminars & Awards

Publishing opportunity

Benefits of CDU Alumni

Websites

### TEMS LINKS

- *This newsletter aims to keep students and graduates of the Tropical Environmental Management Program in touch with each other and with staff in the course*
- *We welcome contributions from students and others, which should be sent to*

TEMs Links  
C/o Dr Penny Würm  
TS-CRC Higher Education Program  
CDU, Darwin NT 0909  
Tel 08 0946 6355  
Fax 08 8946 7107  
[penny.wurm@cdu.edu.au](mailto:penny.wurm@cdu.edu.au)

*Thanks to Cheryl Arnott for layout and editing for this edition of TEMs Links*

# TEM program wins national Carrick Institute teaching award

*By Penny Würm*

We are excited to announce that the TEM Program is the recipient of a 2006 Carrick Institute Citation for Outstanding Contributions to Student Learning.

**Master of Tropical Environmental Management Teaching Development Team (Faculty of Education Health & Science/TS CRC) won a citation for *An engaging, flexible post-graduate program, focusing on tropical Australia and building skills and understandings for regional Professionals in authentic learning contexts.***

**In addition, Dr Keith McGuinness (Faculty of Education Health & Science) won an individual citation for *teaching the whole person: learning-centred partnership in statistics***

The Carrick Institute was established by the Commonwealth Government to promote teaching and learning in higher education. The Carrick Awards and Carrick Citations are aimed at recognising quality teaching in Australian Universities. Believing we had a quality course that deserved recognition, we applied for an award earlier in the year. It was a good exercise for the staff involved as we had to reflect deeply on what we had aimed to do with the program, and why we thought the teaching and learning strategies employed were of benefit to the students learning.

The fact that the TEM program has been recognised in this way is of great benefit to current students and graduates - you can be assured that the TEM program is now nationally recognised as an excellent program. Update your CVs immediately!

Thanks to those students who kindly provided testimonials about their experiences in the TEM program and to all the students who have engaged so fully with the program and also provided us with feed-back which has assisted us to continually improve the program.

For more information on the Carrick Awards at CDU and other Universities see <http://www.carrickinstitute.edu.au/> and click on the link to Australian University Teaching Awards.

## Acting Course Coordinator—until 18th January 2007

Samantha Setterfield is acting as Course Coordinator in Lindsay's absence while on sabbatical leave this semester. Samantha's main area of research is plant ecology. More specifically she is interested in:

- the effects of fire on savanna vegetation
- restoration ecology
- reproductive ecology of savanna vegetation
- environmental weeds

Samantha can be contacted on: 08 8946 6789 or

[samantha.setterfield@cdu.edu.au](mailto:samantha.setterfield@cdu.edu.au)



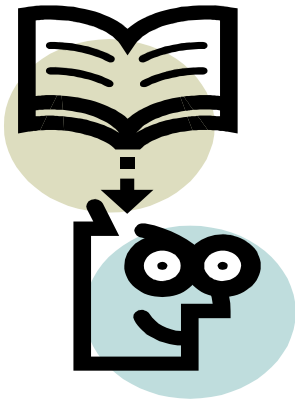
(Continued from page 2)



**CDU winners are gridders.** (Left to right): Dr Steve Shanahan (Dean Faculty of Technology) , Dr Sam Setterfield (TEM program, Faculty of Education Health & Science), Dr Penny Würm (TEM Program, Tropical Savannas CRC), Dr Keith McGuinness (TEM program, Faculty of Education Health & Science), Ms Jodi Tutty (IT Program, Faculty of Technology) and Ms Barbara White (IT Program, Faculty of Technology). Photo: Janice Warren.



**CDU Winners stand proud amongst South Australian colleagues.** The inaugural 2006 Carrick Awards SA/NT presentation ceremony, held at the South Australian Wine Institute, Adelaide. Photo: Janice Warren.



## ***TEM Program Review — has it had an impact on your professional practice?***

*By Penny Würm*

TEM Graduates should expect a phone call or email in the coming months from the TEM coordination and teaching team, as we commence an evaluation of the TEM program. The focus of the review will be the simple question:

*Has the TEM program impacted on your professional practice?*

We gather from your feed-back that the TEM program is generally successful in achieving its goals of providing students with a current and relevant education in tropical environmental management, and providing a positive student experience.

However the course has been running for 9 years and 63 students have now graduated from the program. So the time is ripe to now ask you, as graduates, if the course has assisted in your work as nature resource professionals.

The evaluation will take the form of a short questionnaire, and an unstructured interview during which the participants will be invited to describe their practice since graduating, and how their learning in the TEM program may or may not have been of assistance. This information will be analysed to identify areas of strength and improvement, and will be used to enhance the teaching and learning strategies in the TEM programme.

We will provide a report back to TEM graduates and students via TEMs Links and also hope to publish the results of the study in an educational journal. We'll keep you posted, and if you'd like more information, please do not hesitate to contact Penny Würm, Samantha Setterfield or Lindsay Hutley who are leading the study.

### **Weed Risk Management in the NT**

*By Samantha Setterfield*

During your TEM courses you will learn a lot about the threat that weeds pose to the conservation of biodiversity and to sustainable land management in northern Australia. Weed managers need to be able to prevent the introduction of any new, high risk plant species **and** to prioritise the management of weeds already present in the region. The NT Government (NRETA, DPIFM) and Charles Darwin University (Sam Setterfield., Michael Douglas and Natalie Ros-siter) are working together to develop a Weed Risk Management (WRM) system for the NT. The WRM will be a systematic process to assess the degree of threat posed by various weeds and our ability to manage them.

We've been working on the WRM development for 4 years, in particular, working with interstate and national experts to review systems in place elsewhere and, where possible, modify these other models for use in the NT. Recently, an Australian Standard in weed risk management was published ([HB 294:2006 National Post-Border Weed Risk Management Protocol](#)), and the NT WRM process will meet this national standard.

The WRM will include two key components: an assessment of the plants risk of becoming a weed, and an assessment of the feasibility of control of that plant by weed managers. Both of these assessments are completed by answering a range of questions on the attributes of the plant, its impacts, its invasiveness, and aspects of control such as cost and effectiveness. The choice of questions to be included and the scoring of plant species is being undertaken by a WRM Technical Group (chaired by Sam Setterfield), and the framework which will direct how the WRM will operate is being developed by the NT Government with input from a WRM Reference Group (chaired by Alice Beilby, Acting Director of Weeds Branch, NRETA). During your studies, some of you may have met Keith Ferdinands who recently completed his PhD at CDU on habitat suitability modelling of para grass on Mary River floodplains. Keith is now the WRA Manager with NRETA and the Executive Officer for the WRM Reference Group.

If you'd like any more information on weed risk management, please contact Sam Setterfield (08) 8946 6756 or email [Samantha.setterfield@cdu.edu.au](mailto:Samantha.setterfield@cdu.edu.au)



## *Educational Links with Eastern Indonesia Grow*

As you may have read in previous editions of *TEMsLinks*, CDU has established links with partners in Eastern Indonesia through a number of ACIAR and AusAID projects, lead by Dr Bronwyn Myers, a researcher in the School of Science & Primary Industries. These projects have also included a GIS/RS training component lead by researcher Rohan Fisher, and several staff good-will and information gathering exchanges.



In addition to these project activities we have slowly been building a platform for longer term cross-institutional engagement between Satya Wacana Christian University and CDU. This project has been enhanced thanks to the recent Integrated Rural Development workshop, held in Kupang in April this year. The meeting was attended by senior CDU staff Professor Carole Kayrooz (Dean Education Health and Science) and Professor Bob Wasson (PVC Research). This high level of commitment by senior managers demonstrates the level of commitment of CDU to this activity area.

As a result of discussions at the workshop, the consortium of university partners has expanded to include Nusa Cendana University, a public university located in Kupang and University of the Sunshine Coast, with which CDU already has a MoU for in-country Indonesian language courses. This consortium is now working on a new project, *Capacity Building for Higher Education in Eastern Indonesia*, and is hoping to secure funding for a raft of activities including staff exchanges and mentoring, collaborative curriculum development, short-courses and postgraduate scholarships.

As a follow up to the April workshop Professors Wasson and Professor Kayrooz attended a meeting of senior staff in Kupang in June, which aimed at formalising the links between the four partners.

This is now to be followed up with a working party meeting in West Timor in November at which work will commence on collaborative curriculum development and joint funding applications. One of the first projects underway is a collaborative unit, situated in eastern Indonesia and available to postgraduate and advanced undergraduate students at all partner universities. We'll keep you posted about progress on development of this exciting new elective, as we hope for TEM students in particular will be interested in this kind of opportunity.

For more information about the Integrated Rural Development Workshop held in Kupang this year refer to website at <http://fireindon.cdu.edu.au/workshop/>.

For more information about the current AusAID funded project, refer to <http://indonrmpslp.ehs.cdu.edu.au/overview/act.htm>.

For more information about the now -completed ACIAR Fire in eastern Indonesia Project refer to <http://www.aciar.gov.au/web.nsf/doc/ACIA-6SEW26>

*By Penny Würm*



## Thesis Submissions

Since the last edition of *TEMSLinks*, **Eva Hruskova** submitted her thesis entitled "What are appropriate fire regimes for the Northern Territory monsoonal wetlands?"

### MTEM Theses

Did you know that copies of some of the completed MTEM Theses are lodged in the CDU Library? They can be found in the catalogue using the search term "MTEM" and are all shelved together under catalogue number 500.72.

## Graduation - 2006 & 2007

<http://www.cdu.edu.au/graduation/>

### 13 October 2006

- Darwin Entertainment Centre  
All Faculties

### 24 May 2007 6.30pm Graduation courtyard

- Faculty of Law, Business and Arts
- Institute of Advanced Studies

### 25 May 2007 6.30pm Graduation courtyard

- Faculty of Education, Health and Science
- Faculty of Technology

### 15 June 2007 7.00pm

- Alice Springs Convention Centre  
All faculties

### Churchill Fellowship— Call for Applications

The Winston Churchill Memorial Trust fellowship applications open 1 Nov-28 Feb for 2007. Information, guidelines and the application form can be access at the following website <http://www.churchilltrust.com.au/> email [churchilltrust@bigpond.com](mailto:churchilltrust@bigpond.com) or telephone 1800 777 231.

The Churchill Fellowship is the award of an opportunity, through the provision of financial support to Australian Citizens from all walks and interests of life and affords them to travel overseas to undertake analysis, study, project work or develop an interest that cannot readily be undertaken in Australia.

Currently the average Fellowship is \$25,000.

Closing date 28 February 2007

A proposed itinerary of no less than 4 weeks and no more than 8 weeks.

## MTEM Graduations

May Graduation ceremony was a very happy occasion for MTEM graduates John Bonney and Justin Perry and GDTEM graduates Marj King and Jennifer Descalso, who all took the opportunity to stride the red carpet. Simon Gummer (back in Ireland) and Graeme Armstrong weren't able to make the ceremony, but graduated also.



Left to right: Dr Lindsay Hutley (TEM Course Coordinator), Dr Penny Würm (MTEM Research Projects Coordinator/ Tropical Savannas CRC), John Bonney (MTEM Graduate), Justin Perry (MTEM Graduate) and Marj King (GDTEM Graduate). We couldn't find Jennifer for the photo but we saw her on stage. Photo: Lynda Prior

## TEM Graduate Update



**Johanna Karam** will be returning to Darwin to work at CDU. After 3 years working for Oxfam in Oekussi, East Timor, Jo will take up a new position as a research associate for Indonesian project development in the School of Science & Primary Industries and in School for Environmental Research. We'll be thrilled to have Jo's cross-cultural, language, natural resource management and project management skills on board.

**Deb Bass** has emailed to say she "started work with Conservation International in early April 2006, on a project to set up conservation areas throughout Melanesia. I'm employed as the marine person in a team of 6 people based at Atherton at the CSIRO offices. The reason for that is that CI is working with CSIRO on developing GIS for Melanesia, and there was office space available. It's a 3 yr contract so hopefully this will be an opportunity for me to branch out into international work. Initially I will be office based but hopefully down the track I shall get to see some of the marine areas we are trying to protect ... so looking forward to that. Its really great to be working for an NGO focused on conservation. But very different from working for the Aust Gov!"

## MTEM Research Projects— How are they examined?

By Penny Würm  
MTEM Research Projects Coordinator  
penny.wurm@cdu.edu.au

The research project is often the highlight of a TEM student's candidature. It is usually the most daunting prospect, followed by one of the biggest challenges within a MTEM candidature. But it is also invariably a transforming experience, after which students feel enriched, and emerge with new skills and confidence. For this reason, working with project students is also a highlight of my work.

Unlike a research Master, the thesis component of the MTEM is graded. We thought you may be interested in seeing the spread of grades awarded to MTEM theses by the examination process. As you can see HD are not easy to achieve (Table 1).

**Table 1: Grades awarded for all 32 research project theses submitted since 2002 in the Master of Tropical Environmental Management program, Charles Darwin University.**

GRADE	NUMBER AWARDED	% AWARDED
High Distinction	7	21.88%
Distinction	10	31.25%
Credit	14	43.75%
Pass	1	0.03%
<b>Total</b>	<b>31</b>	<b>100%</b>

Grades are determined by a minimum of 2 examiners, with a third examiner called upon if there is >10% between the marks awarded by the first two examiners. Since 2002, 58% of MTEM theses have required a third examiner. This often leads to very long examination times for some theses, while the third examiner is identified and contacted and finally examines the thesis. We think this range of opinions, as indicated by the range in the marks awarded by examiners, is a reflection of the often multi-disciplinary nature of topics chosen by MTEM students, which are in turn viewed differently from different disciplinary perspectives.

MTEM Research Project students (L to R) Eva Hruskova, Kate Minahan and Rowena Eastick, discuss their projects at a Saturday afternoon Projects Workshop, semester 1 2006. Photo: Penny Würm





(Continued from page 8)

MTEM thesis examiners are always chosen in consultation with the student and their supervisor(s). We use both internal and external examiners, with almost half being from outside the School of Science & Primary Industries. In a comparison of the grades awarded by different examiners, we found that there is no significant difference between School and extra-School examiners (Table 2).

**Table 2: Grades awarded by examiners from different employment sectors, for MTEM theses. Note that ANOVA did not detect any significant difference among sectors.**

Employment sector	n	Mean grade awarded (± S.D.)
CDU – School Science & Primary Industries	18	74.7 ± 7.6
CDU – other Schools	5	62.3 ± 7.9
CDU – research only staff	10	70.4 ± 9.4
Commonwealth Agency	3	82.3 ± 13.3
Consultant	3	80.7 ± 16.4
NGO	3	70.8 ± 18.3
NT Government Agency	4	73.5 ± 6.7
Other universities	4	78.0 ± 10.6

In summary, this reflection on the examination of MTEM theses mean that candidates can be confident of a rigorous process, the quality of which is assured by the inclusion of extra-School examiners.

## CDU Staff gain funding

July brought news that CDU environmental experts Dr Michael Douglas and Prof. Stephen Garnett will lead a major research team as part of an \$8 million national initiative focusing on Tropical Rivers and Coastal Knowledge (TRACK).

The TRACK research hub, to be hosted at CDU Casuarina campus, will bring together over 50 leading tropical river and coastal researchers and managers from 10 agencies across Australia to focus on the sustainability of rivers and catchments from Cape York to Broome.

The TRACK research initiative aims to increase our knowledge of the important natural assets and ecosystem services provided by tropical rivers and coasts; understand the implications of potential developments and identify opportunities to foster genuinely sustainable enterprises in the region.

Other team members include Joe Morrison from the North Australian Indigenous Land and Sea Management Alliance and CRC Tropical Savannas Management, Prof. Stuart Bunn from Griffith University, Prof. Peter Davies from University of Western Australia, Assoc. Prof. Jon Olley from CSIRO and Jim Donaldson from Land & Water Australia.

A critical feature of the research will be engagement with Indigenous people, who own and manage large parts of the region's catchments and coasts.

The world-class research hub is being funded from the Commonwealth Environmental Research Facility (CERF) program over the next 4 years. Additional funding includes \$3 million from Land & Water Australia and \$4.8 million in kind from the NT Government.

Acknowledgements to CDU website

# CONFERENCES & SEMINARS



**CDU Seminars** (you can request to receive email notice of seminars) :  
School for Environmental Research—<http://www.cdu.edu.au/ser/Seminars.html>

Faculty of Education, Health and Science—<http://www.cdu.edu.au/ehs/research/semprogram.html>

School for Social and Policy Research—<http://www.cdu.edu.au/sspr/seminars.html>

School of Indigenous Knowledge systems—<http://www.cdu.edu.au/aiks/seminars.html>

## **Heywire gives voice to regional and rural youth**

Have your say about what's important for you and for all young people from regional and rural Australia. Your ideas and your voice on national ABC radio! Five days at the Heywire Youth Issues Forum in February 2007, staying at the Australian Institute of Sport in Canberra with other Heywirers from all over Australia!. Contact: Tel: 1800 26 26 46 (freecall) Web: [www.abc.net.au/heywire/](http://www.abc.net.au/heywire/) Entries close Friday 1st September 2006

**International Conference on Environment: Survival and Sustainability**, 19-24 February 2007, Nicosia, Northern Cyprus The Conference aims to bring together around 2000 scholars and researchers from over 90 countries around the world to discuss environmental issues from a variety of perspectives. Relevant UN and EU Agencies as well as other international/regional organizations will be invited as sponsors or technical and organizational assistance providers to the Conference.

Recently, degradation of the environment, pollution, dwindling fresh water supplies, and particularly a series of natural mega-disasters such as typhoons, earthquakes, and landslides have refocused the world's attention on the urgency for more research and practical steps on environmental issues.

The main theme of the conference will be the urgent need in taking steps by the international organizations, states, local authorities, and non-governmental organizations to move forward a sustainable environment. In this way, the Conference will aim at making a contribution to the worldwide debate and effort on strengthening the bridge between theory and practice in meeting environmental threats/challenges. There will be an effort to create a multi-disciplinary discussion. <http://www.neuconference.org/>

## **2006 EIANZ Conference**

On behalf of the Environment Institute of Australia and New Zealand, the Organising Committee of the EIANZ Conference 2006 invites all members of the environment profession to join colleagues in Adelaide, South Australia from 17-20 September 2006. The conference program includes workshops specifically targeted for environmental professionals and their professional needs:

EP & BC Act - Referrals & Assessments, Impact Assessment (SIS), Certification of Environmental Practitioners, Professional Development, Being a Successful Consultant, Policy and Practice of External Relations, AJEM

There are also over 50 papers on a range of topics of interest in the areas of Business development; Energy; Environmental Approvals; Environmental Education; Environmental Impact Assessment; Environmental Management; Environmental Planning; Environmental Research; Measuring Sustainability; Natural Resources Management; Strategic Environmental Assessment

Keynote speakers include **John Scanlon**, Independent Commissioner on the Murray Darling Basin Commission; **Bill Bayfield**, Chief Executive Environment Bay of Plenty in New Zealand; **Jeff Tryens** Executive Director of the Oregon Progress Board, Oregon, USA (and now Executive Director SA Strategic Planning - Community Connection, advising the SA Premier on state strategic planning and community consultation); and **Yvonne Sneddon**, the Presiding Member of the Adelaide and Mount Lofty Ranges Natural Resources Management Board.

The Conference will appeal to all those who work in any of the numerous aspects of environment such as management, planning, education, law, industrial operations, research and audit. A two-day scientific program is planned in association with field trips and the opportunity for all delegates to enjoy pre Conference tours to some of South Australia's major attractions. Full details are available from the Conference web at [www.plevin.com.au/eianz2006](http://www.plevin.com.au/eianz2006)

*(Continued on page 11)*

## CONFERENCES & SEMINARS

### **Conference on Life Cycle Assessment November 22- 24, 2006, Langham Hotel Melbourne**

Internationally and in Australia, Life Cycle Assessment continues to grow both in the detail of application, and the breadth of assessment. At the same time many other tools and approaches are increasingly being used along with LCA or incorporating LCA aspects. It is now recognized that decision support for sustainability requires many players and approaches beyond traditional methodologies.

One aim of the conference is to make bridges between different environmental assessment methods that have a sustainability focus. This includes:

Life cycle assessment, Energy and greenhouse life cycle studies, Life cycle costing, Triple bottom line accounting approaches, Ecological footprints, Materials flow analysis, Uncertainty analysis in environmental assessment, Input Output analysis.

The conference also aims to provide a forum for sharing LCA experience in different sectors such as:

Building applications, Waste Management, Water issues, Energy and fuel production system, Products and packaging manufacture, Food and Agriculture.

Keynote Speakers

Greg Norris, *Harvard School of Public Health, Sylvania, USA*; Astushi Inaba, *Life Cycle Assessment Centre, NIRE, Japan*; Henry King, *Unilever UK*; Paul Tebo (*ex dupont*) *USA*.

Special workshops and courses

Introduction to LCA, Advance LCA techniques, Life Cycle Management, Input output analysis

<http://lca-conf.alcas.asn.au/>

### **Awards & Scholarships**

**CDU Scholarships**—<http://www.cdu.edu.au/scholarships/>

#### **AFUW-NT Scholarships**

Applications for scholarships from NT branch of the Australian Federation of University Women (AFUW NT) are open on 30<sup>th</sup> September 2006 for study the following year. One postgraduate, one undergraduate and one scholarship for an Indigenous student are available for women studying full-time in the NT. For more information see the AFUW NT website at <http://www.afuw-nt.org.au/scholarships.htm>



**CDU Alumni Scholarship** has been established to assist and encourage Alumni members and their families to study at Charles Darwin University (CDU). CDU's Alumni has been set up to support and promote the interests of our graduates, and to foster an environment where members can contribute to the future of the University. The Alumni provides a professional and social connection for all people who have contributed to CDU, whether as a student, staff member or friend of the University or one of its predecessors. The aim of the CDU Alumni Scholarship is to encourage new students who have an immediate family member who is a member of CDU's Alumni to study at the University. The value of the scholarship is a maximum of \$1,000 for one year for a full-time student, to be paid in semester 1 subject to confirmation of enrolment in semester 2. <http://www.cdu.edu.au/scholarships/entry-lvl.html#alm>

**Awards for scientific excellence for junior and senior researchers.** You are invited to nominate candidates for the prestigious awards of the Australian Academy of Science. Information about the awards is available at <http://www.science.org.au/awards> **Closing date of 30 August 2006**

**2007 Fullbright Awards** The Australian-American Fullright Commission has recently announced the opening of the competition for the 2006 Fullbright Awards. For further information visit: <http://www.fulbright.com.au>

**RIRDC Rural Women's Award** was instigated in 2000 with the objective of increasing women's capacity to contribute to agriculture and rural Australia, by providing them with the support and resources to further develop their skills and abilities. The Award now in its seventh year is playing a pivotal role in the future sustainability of rural Australia, by encouraging rural women and their increased contribution to rural industries. The 2006 Award provides a Bursary of \$10,000 to each of the seven State and Territory winners and the opportunity for winners and runners up in each State and Territory, to attend the prestigious Australian Institute of Company Directors' course. The Award supports women with a strong and positive vision for the future of agriculture and is open to all women involved in agriculture, including fisheries and forestry, natural resource management and related service industries. Applications close: 15th October 2006 <http://www.ruralwomensaward.gov.au/>

## jobhunters

Hallmark Editions have two very useful sites , one for environmental jobs:

<http://www.envirojobs.com.au>

the other is for jobs in research:

<http://www.researchjobs.net.au>

“NRMjobs” is another excellent site advertising jobs that TEM students are likely to be interested in:

<http://www.nrmjobs.com.au>

Vacancies in all Queensland government agencies:

[www.jobs.qld.gov.au](http://www.jobs.qld.gov.au)

Vacancies in all NT government agencies are at:

<http://notes.nt.gov.au/dcis/RMS.nsf/NTGEmploymentHome?OpenForm>

Vacancies in all WA government agencies are at:

<http://jobs.wa.gov.au/>

CSIRO's job site:

<http://recruitment.csiro.au/asp/index.asp>

You could also look at the various Indigenous Land Council websites for jobs:

Northern Land Council

<http://www.nlc.org.au/html/jobs.html>

Balkanu Indigenous Land Corporation

<http://www.balkanu.com.au/contact.html>

Kimberley Land Council

<http://www.klc.org.au/employ.html>

## Postgraduate Students Association at CDU

Have you subscribed to the CDU Post-graduate Students Association mailing list?

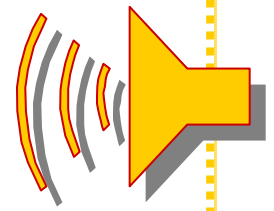
The CDU Post-graduate Students Association (CDUPSA) represents the interests of all post-graduate students (Honours, Masters by Coursework, Masters by Research, PhD) at CDU. CDUPSA provides information for all post-graduate students through its website as well as facilities for post-graduate students at the Casuarina Campus through the Post-graduate Students Lounge located in Building 24.

Elected members of the CDUPSA Executive attend meetings with management representatives and are the voice of CDUPSA in other forums at CDU and nationally. In order for CDUPSA to be aware of issues which are important to both internal and external CDU post-graduate students, we maintain a mailing list.

If you want to be kept informed of issues and events important to CDU post-graduate students, subscribe to the CDUPSA mailing list by clicking on this link CDU-postgrads <http://lists.cdu.edu.au/mailman/listinfo/cdu-postgrads> and following the simple instructions.



## Call for manuscripts for the *Northern Territory Naturalist*



With the intention of publishing an issue late in 2006, the Editorial Committee of the *Northern Territory Naturalist* is now calling for manuscripts. Manuscripts may relate to any aspect of natural history or ecology relevant to the Northern Territory, and may include reviews, papers, research reports, species profiles and thesis abstracts. Manuscripts for the 2006 issue are still being accepted.

*Northern Territory Naturalist* is a peer-reviewed journal. The journal is registered (ISSN 0155-4093) and sent to Thomson's Zoological Record for abstracting (<http://scientific.thomson.com/support/products/zr/zr-serials/>).

Published papers that otherwise qualify (for instance, as original research) are recognised by DESTS.

Author instructions may be downloaded from <http://www.geocities.com/ntfieldnaturalists/journal.htm>

Manuscripts should be submitted in digital form by emailing to [helen.larson@nt.gov.au](mailto:helen.larson@nt.gov.au). Editors of the journal are Dr Helen Larson and Steven Reynolds and Dr Lynda Prior.

Back issues of the *Northern Territory Naturalist* are available individually (some in photocopy only) or as a set. The cost of a set is \$50 - for nos. 1-17 or \$60- for nos. 1-18. To obtain back issues, contact Don Franklin, [don.franklin@cdu.edu.au](mailto:don.franklin@cdu.edu.au), phone 8946 6976 (w) or 8948 1293 (h), or drop by to room 31.2.34, Charles Darwin University Casuarina.

### CDU Alumni and its benefits

Charles Darwin University's (CDU) Alumni has been set up to support and promote the interests of our graduates, and to foster an environment where members can contribute to the future of the University. The Alumni provides a professional and social connection for all people who have contributed to CDU, whether as a student, staff member or friend of the University or one of its predecessors.

Members of the Alumni are invited to attend CDU events throughout the year which provides an opportunity to catch up with friends and staff, and are also kept informed about new CDU initiatives. In addition, members are given access to a range of discount services.

<http://www.cdu.edu.au/alumni/benefits.html>

#### See also: Alumni Scholarship

<http://www.cdu.edu.au/scholarships/entry-lvl.html#alm%20>



## WEB-SITES

For an update on **Tropical Savannas CRC** visit: <http://savanna.cdu.edu.au/>  
and **Savanna Links**: [http://savanna.ntu.edu.au/publications/savanna\\_links\\_all.html](http://savanna.ntu.edu.au/publications/savanna_links_all.html)

**Savannah Explorer**: <http://savanna.ntu.edu.au/information/savannaexplorer.html>

**Subscribe to the NTECOL discussion list** <http://lists.cdu.edu.au/mailman/listinfo/ntecol>



Charles Darwin University—Research <http://www.cdu.edu.au/research/>

**CDU's School for Environmental Research (SER)** See this link to stay informed: <http://www.cdu.edu.au/ser/>

**CDU Faculty of Education, Health & Science** <http://www.cdu.edu.au/ehs/>

**Gateways to climate change** ClimateArk is a climate change portal and search engine dedicated to promoting public policy that addresses global climate change through reductions in carbon dioxide and other emissions, renewable energy, energy conservation and ending deforestation. Developed by Ecological Internet, the non-profit organisation has other websites such as the Eco-Portal that is an information gateway designed to empower the environmental sustainability movement. <http://www.climateark.org/>

**Online guide to pests** Queensland's Department of Natural Resources and Management's weed and pest animal website has undergone a major redevelopment with many new features including:

- \* A-Z listing of declared plants and animals and other significant pests
- \* Regularly updated 'hot topics'
- \* Current newsletters and bulletins
- \* Educational resources, training and careers
- \* Searchable pest distribution and predictive maps and mapping systems
- \* Legislation, policies and permits
- Pest management research <http://www.nrm.qld.gov.au/pests>
- 

**Windows to Australia** PictureAustralia is an Internet based service that allows you to search many significant online pictorial collections at the same time. It provides a service to the visual collections of a range of public libraries, museums, academic libraries, archives and the national libraries of both Australia and New Zealand. <http://www.pictureaustralia.org>

Q-links is the monthly bulletin of the **Queensland Landcare Foundation**. To subscribe, <http://www.landcare.org.au/default.htm>

**Audit provides NRM toolkit** The National Land and Water Resources Audit and ANZLIC - the Spatial Information Council have developed a toolkit to assist regional natural resources management groups discover, access, visualise and manage their data and information. The toolkit can be used as a text book document, teaching aid or as a series of stand-alone modules. <http://www.nlwra.gov.au/toolkit/contents.html>

**Spin a yarn on the web** The Young Australian Youth Network is an interactive website designed for young people in rural industries. It aims to provide people with a place to interact and share information with others around Australia. <http://www.yarn.gov.au/>

**Australian Academy of Science** <http://www.science.org.au/>

## WEB-SITES

For tracking of live fires and historical data the Natural Heritage Trust and TS-CRC supported **North Australian Fire Information** website at: <http://www.firenorth.org.au/nafi/init.jsp> JRP is an international refereed journal with a transdisciplinary focus, available in the open access mode, i.e., available free of charge to the readers. The journal is supported by a consortium of institutions drawn from different parts of the world. It is published electronically by the International Consortium for the Advancement in Academic Publication (ICAAP)

The **Science and Development Network** (SciDev.Net) has launched a useful online resource that provides crucial data about the current state of the world's biodiversity [www.scidev.net/biofacts](http://www.scidev.net/biofacts)

**Journal of Research Practice** <http://jrp.icaap.org/> JRP is an international refereed journal with a transdisciplinary focus, available in the open access mode, i.e., available free of charge to the readers. The journal is supported by a consortium of institutions drawn from different parts of the world. It is published electronically by the International Consortium for the Advancement in Academic Publication (ICAAP)

**Land and Water News** is a fortnightly newsletter compiled by Hallmark Editions. It provides much information about conferences, plans, guidelines, reports, study tours. Web address: [www.halledit.com.au](http://www.halledit.com.au)

**Interactive online atlas** Queensland's first publicly available online atlas provides information about the State's regions, councils, towns and suburbs using interactive mapping tools. It offers a rich resource of information - from demographics and economic and social statistics to general property and suburb. Visit: <http://www.information.qld.gov.au>

**Meet Qld's wildlife** The Queensland Environmental Protection Agency has launched a new website producing wildlife lists. Wildlife Online allows visitors to download species lists for areas including national parks, state forests and shires within Queensland. Visit: [http://www.epa.qld.gov.au/nature\\_conservation/wildlife/wildlife\\_online](http://www.epa.qld.gov.au/nature_conservation/wildlife/wildlife_online)

**Regional ecosystem maps online** Landholders submitting vegetation management applications to the Queensland Government will have their job made easier thanks to a new web-based facility. The new service allows certified Regional Ecosystem (RE) maps to be downloaded without charge from the Internet. The information shown on the downloadable maps helps landholders understand their obligations, which is a crucial element of all applications under the Vegetation Management Act. The new service provides easy access to the information landholders need to apply under the vegetation management framework and is an important step forward. Visit: <http://www.epa.qld.gov.au/REMAPS>

**River Recovery Inventory** This site provides an overview of river management activities across the Northern Territory, categorised into the following groups: -Assessment, -On-ground works, -Planning, -Research, -Tools, and -Training. It is hoped that the Inventory will be a resource for river and land managers throughout the Northern Territory and more broadly across northern Australia. <http://www.greeningaustralia.org.au/GA/NT/WhatsNew/RiverRecoveryInventory.htm>

See the WA Government Conservation And Land Management site: <http://www.naturebase.net/index.html>

**Wingspan**, a Birds Australia publication <http://www.birdsaustralia.com.au/>

**Ecos**, a CSIRO publication <http://www.publish.csiro.au/?nid=214>

# TEMS Links

## Tropical Environmental Management Students' Newsletter

Vol 7 No 2 August 2006

If undelivered, return to P Würm, Tropical Savannas CRC, CDU, Darwin 0909

Postage Paid  
Australia

### **The Northern Territory Field Naturalists Club**

meets on the second Wednesday of the month, at 7.45 pm in the SAIKS seminar room (Bldg 30) here at CDU Casuarina. Guest speakers present informative talks on the flora and fauna of the region. There are also regular excursions.

Contact: Don Franklin:  
don.franklin@cdu.edu.au  
phone 08 8946 6976(w) or  
08 8948 1293 (h)

**The Top End Native Plant Society** meets on the third Thursday of each month at Marrara Christian School (corner of Amy Johnstone and Macmillans Rd). The meetings start at 7.30 and invited guest speakers provide insight into various aspects of Top End flora. Visit their website for more info:

<http://tenpsnt.tripod.com/>

If you want to be removed from our mailing list (electronic or hardcopy), please let me know by emailing penny.wurm@cdu.edu.au  
Thanks